



Tackle soil  
erosion in time.



## Earth anchoring for slopes

Vulcan® Earth Anchors keep geotextile mats firmly in place, effectively preventing soil erosion on slopes.

- Fast and easy installation
- The only supplier offering Earth Anchors not only in galvanized steel and aluminium bronze, but also in stainless steel
- Fast delivery from stock
- Fully manufactured in Europe from recycled steel
- Sustainable alternative to a grouted anchor
- Supports biodiversity on slopes by combining Vulcan® Earth Anchors with geotextile mats



Sustainable and stable  
slopes start with strong  
anchoring.







Prevent  
infrastructure  
instability.



## Anchoring infrastructure with anchor screws

In a changing climate with increasingly extreme weather conditions, it is essential to properly anchor structures related to infrastructure.

- Unique system with a patented spherical head
- Sustainable and high-quality alternative to concrete foundations
- Fast and simple installation with the major benefit of immediate load-bearing capacity
- Easy-to-use and portable installation equipment



A safe and reliable  
infrastructure starts  
with strong anchoring.





## Applications with Anchor Screws and Vulcan® Earth Anchors



Slopes



Retaining walls



Cables & pipelines



Highways and railways



Sheet piles



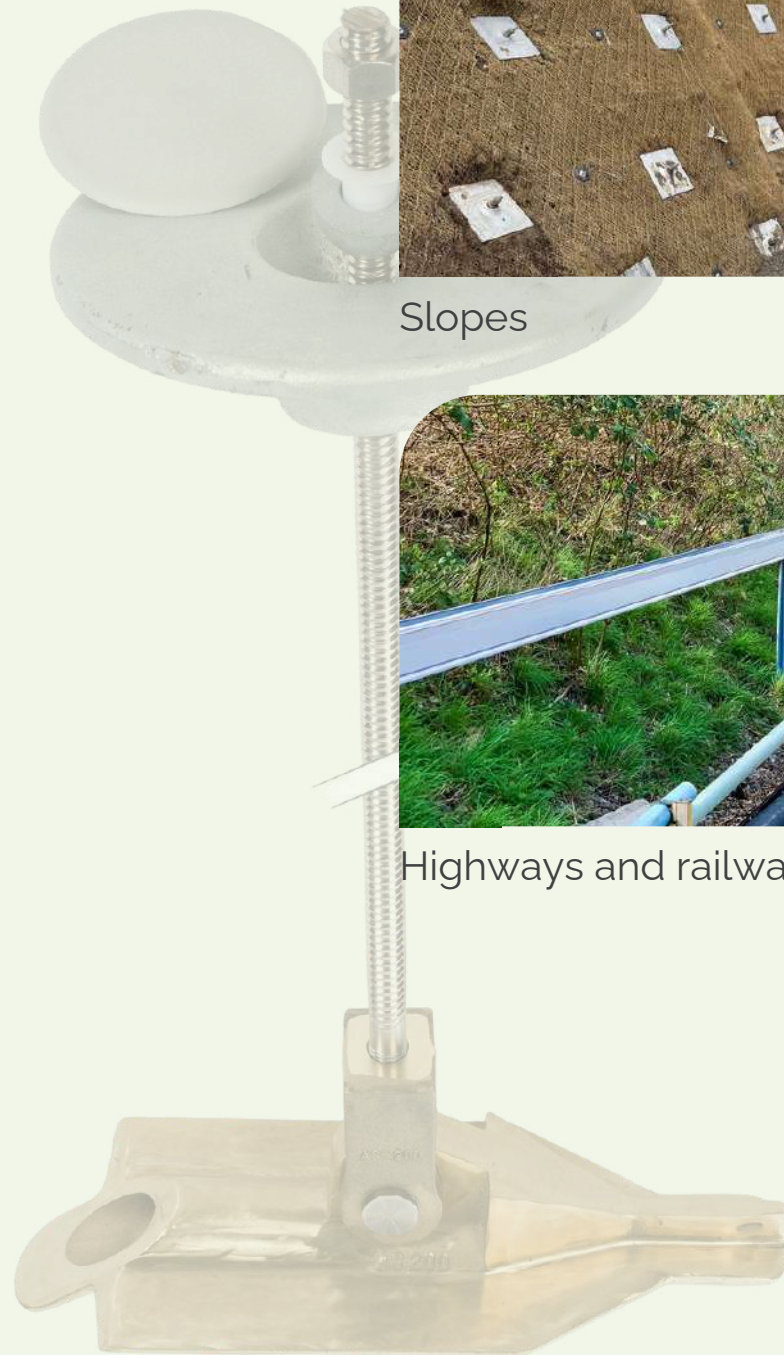
Solar panels



Temporary structures



Traffic systems





## On-site support



To ensure every project is completed successfully, we provide on-site support. This ensures that our solutions are installed correctly and form the foundation for a safe and reliable above-ground infrastructure.

- On-site testing
- Supervision during project execution
- Collaboration with external contractors
- Working with a partner who has been specialising in anchoring solutions since 1995

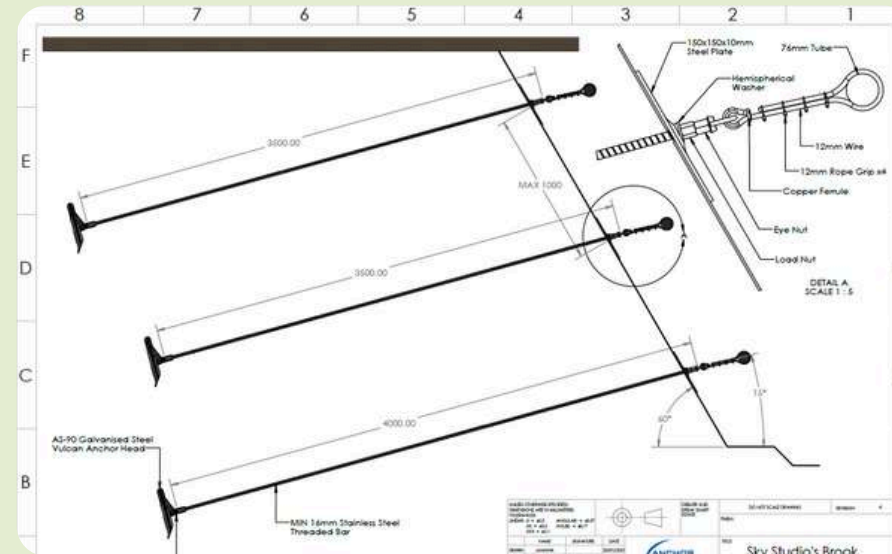
## Contact us:

[info@greenmax.eu](mailto:info@greenmax.eu)

+31 413 294 447

[greenmax.eu](https://greenmax.eu)

## CAD drawings



To ensure safe and precise installation, custom CAD drawings are designed for each project.

## Tools



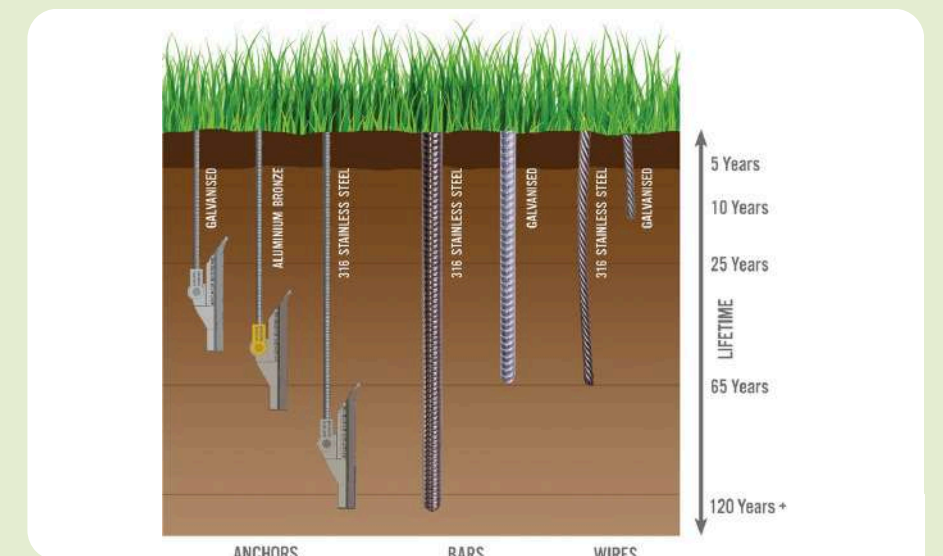
Specific tools are essential for the correct installation of anchoring systems. By renting tools from us, you always have access to the right equipment.

## Various sizes



Vulcan® Earth Anchors are available in different models to meet the specific requirements of a wide range of applications and soil types. The product name indicates the maximum load capacity (kN) per anchor.

## Durable materials



Vulcan® Earth Anchors are designed using materials that guarantee a long service life. In this way, we help build safe and future-proof infrastructure that lasts for generations.